



238 Pillow Street
Butler, PA 16001
724-283-4681
724-283-5939 (fax)
www.bwieagle.com

PRODUCT INFORMATION BULLETIN

AIR-EAGLE® SR PLUS 2.4 GHz RF Transmitter MODEL 36-1400-120VAC – Rev.3

DESCRIPTION

The AIR-EAGLE SR PLUS, MODEL 36-1400-120VAC is an R.F. transmitter capable of sending up to four dry contact input commands to the Air-Eagle SR Receiver, model 38-2000 or 38-8000 from up to 1200 feet away. This unit is user-programmable for up to 128 digital addresses and eight selectable frequencies to allow multiple transmitters and receivers to operate simultaneously in the same area without interference.

INSTALLATION

1. Mount the AIR-EAGLE SR PLUS TRANSMITTER in a convenient location.
2. Install wiring to contact input terminal strip.
3. Connect AC power and control to the proper terminals in your control circuit.

DIGITAL ADDRESS & FREQUENCY SET-UP

This transmitter is factory programmed to Frequency #1 and Digital Address "0". These settings can be changed by the user in any combination **but must match the receiver that is set up to communicate with this transmitter. If using this transmitter with a model 38-2000 4-relay receiver, the digital address must be kept at the default of Digital Address "0".**

- 1) Remove top cover.
 - 2) Select desired address and/or network frequency
 - 3) Move SW4 on SEL2 to the "CLOSED" position. The TX LED will illuminate (no data is being transmitted during this programming)
 - 4) Once LED is illuminated, move SW4 on SEL2 back to the "OPEN" position. The TX LED will extinguish.
 - 5) Programming is now complete. Replace top cover.
- Note – Selected address and frequency settings will be maintained, in the internal flash memory, even if power is removed from unit. The above procedure needs to be performed only if *changing digital address and/or network frequency*

SEL1 (ADDRESS)	Seven dip switches for selecting digital address of this transmitter (Maximum of 128 combinations)			
SEL 2 (SW 1-3): (NETWORK FREQUENCY)	Network Address	SW1	SW2	SW3
	1	OPEN	OPEN	OPEN
	2	CLOSED	OPEN	OPEN
	3	OPEN	CLOSED	OPEN
	4	CLOSED	CLOSED	OPEN
	5	OPEN	OPEN	CLOSED
	6	OPEN	CLOSED	OPEN
	7	CLOSED	CLOSED	OPEN
8	CLOSED	CLOSED	CLOSED	
SEL2 (SW4)	Normal Operation	Programming		
	OPEN	CLOSED		

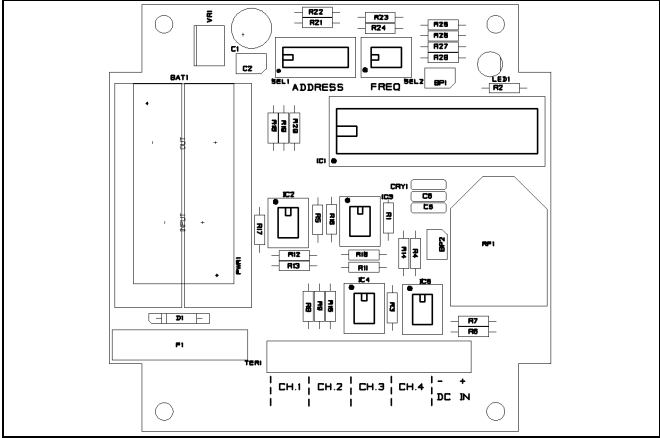


Dimensions (with mounting plate) 6.3" L x 4.8" W x 2.3" H

TERMINAL STRIP WIRING

1	Ch1 Input (+)	5	Ch3 Input (+)	9	120 VAC INPUT (L)
2	Ch1 Input (C)	6	Ch3 Input (C)	10	120 VAC INPUT (H)
3	Ch2 Input (+)	7	Ch4 Input (+)		
4	Ch2 Input (C)	8	Ch4 Input (C)		

CONTROLS & INDICATORS



TX LED	Illuminates continuously while any button is depressed and unit is transmitting.
Dry Contact Inputs	Transmits individual RF codes to the receiver

APPROVALS

United States (FCC)	OUR-XBEEPRO
Canada (IC)	4214A-XBEEPRO
Europe (CE)	ETSI

AIR-EAGLE® SR PLUS

2.4 GHz RF Transmitter

MODEL 36-1400-120VAC – Rev.3

SPECIFICATIONS

AC Input	120 VAC, 16 W, 50/60 Hz
Enclosure	ABS Plastic NEMA 3, 3R, 4, 12 + 13
Transmit Frequency	2.4GHz Spread Spectrum
Transmitter Coding	128 Digital Addresses (Available only when communicating with model 38-8000)
Transmitter Channels	8 Independent Networks
Antenna Connection	Internal – No external antenna needed
RF Output Power	60 mW
Transmit Range	Approximately 1200 Feet
Operating Temperature	-40° F to +185° F

REPLACEMENT PARTS & ACCESSORIES

2.4GHz TNC Portable Antenna	49-1201
PC Board	36-1402-120VAC
Air-Eagle SR Receiver – 4 Relay	38-2000
Air-Eagle SR Receiver – 8 Relay	38-8000

LIMITED WARRANTY STATEMENT

BWI Eagle Inc. warrants the Air-Eagle Remote Control System, if properly used and installed, will be free from defects in material and workmanship for a period of 1 year after date of purchase. Said warranty to include the repair or replacement of defective equipment. This warranty does not cover damage due to external causes, including accident, problems with electrical power, usage not in accordance with product instructions, misuse, neglect, alteration, repair, improper installation, or improper testing. This limited warranty, and any implied warranties that may exist under state law, apply only to the original purchaser of the equipment, and last only for as long as such purchaser continues to own the equipment. This warranty replaces all other warranties, express or implied including, but not limited to, the implied warranties of merchantability and fitness for a particular purpose. BWI Eagle makes no express warranties beyond those stated here. BWI disclaims without limitation, implied warranties of merchantability and fitness for a particular purpose. Some jurisdictions do not allow the exclusion of implied warranties so this limitation may not apply to you. To obtain warranty service, contact BWI Eagle for a return material authorization. When returning equipment to BWI Eagle, the customer assumes the risk of damage or loss during shipping and is responsible for the shipping costs incurred.

DOCUMENT DATE: 22-Feb-07



238 Pillow Street
Butler, PA 16001
(724) 283-4681
Fax (724) 283-5939
www.bwieagle.com